



286 Woodland Walk, Aldershot, GU12
4FY

01 499 5000


MARTIN&CO

286 Woodland Walk, Aldershot,
GU12 4FY

Flat

2 Bedrooms, 2 Bathroom

£1,100 PCM

Date Available: 21st June 2024

Deposit: £1,269

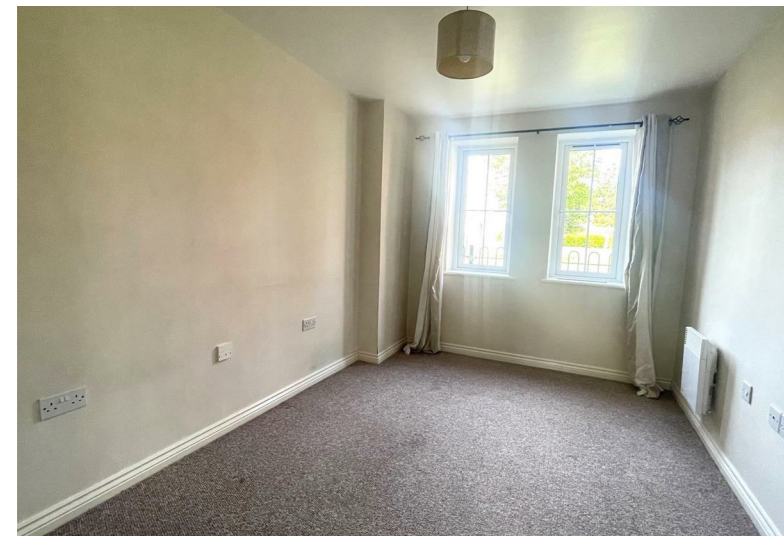
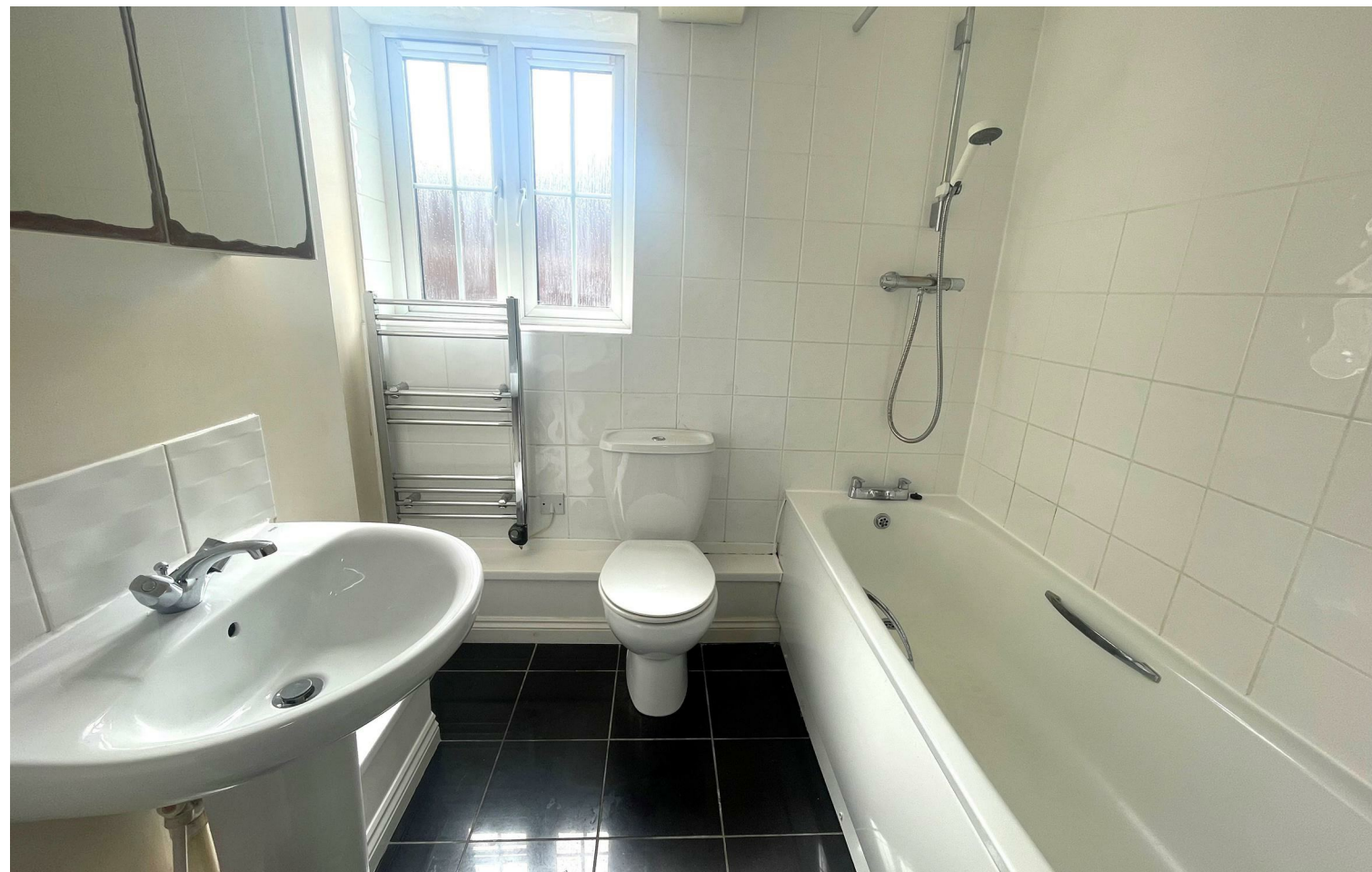
Not specified

- EPC Rating - D (61)
- Council Tax Band - C
- Deposit - £1,269
- Available immediately
- Allocated parking
- Spacious living room
- Kitchen with integrated appliances
- Two double bedrooms

Martin & Co are delighted to bring to the market this recently recarpeted two bedroom flat located in the sought after Woodland walk development. This property features from two double bedrooms, a spacious living room, bathroom and kitchen with integrated appliances. Externally this property benefits from designated parking as well as on road parking nearby.

minimum household income - £33,000

Available immediately
holding deposit - £253





Energy Efficiency Rating

| | Current | Potential |
|---|---------|-----------|
| Very energy efficient - lower running costs | | |
| (92 plus) A | | |
| (81-91) B | | |
| (69-80) C | | |
| (55-68) D | | |
| (39-54) E | | |
| (21-38) F | | |
| (1-20) G | | |
| Not energy efficient - higher running costs | | |
| | 61 | 75 |

England & Wales EU Directive 2002/91/EC

Environmental Impact (CO₂) Rating

| | Current | Potential |
|---|---------|-----------|
| Very environmentally friendly - lower CO ₂ emissions | | |
| (92 plus) A | | |
| (81-91) B | | |
| (69-80) C | | |
| (55-68) D | | |
| (39-54) E | | |
| (21-38) F | | |
| (1-20) G | | |
| Not environmentally friendly - higher CO ₂ emissions | | |

England & Wales EU Directive 2002/91/EC

Martin & Co Aldershot Lettings
173 Victoria Road, Aldershot, Hampshire, GU11 1JU
01252 311974 . aldershot@martinco.com

01252 311974
<http://www.martinco.com>



Accuracy: References to the Tenure of a Property are based on information supplied by the Seller. The Agent has not had sight of the title documents. A Buyer is advised to obtain verification from their Solicitor. Items shown in photographs including but not limited to carpets, fixtures and fittings are not included unless specifically mentioned within the sales particulars. They may however be available by separate negotiation. Buyers must check the availability of any property and make an appointment to view before embarking on any journey to see a property. No person in the employment of the agent has any authority to make any representation about the property, and accordingly any information given is entirely without responsibility on the part of the agents, sellers(s) or lessors(s). Any property particulars are not an offer or contract, nor form part of one. **Sonic / laser Tape:** Measurements taken using a sonic / laser tape measure may be subject to a small margin of error. **All**

Measurements: All Measurements are Approximate. **Services Not tested:** The Agent has not tested any apparatus, equipment, Fixtures and Fittings or services and so cannot verify that they are in working order or fit for the purpose. A Buyer is advised to obtain verification from their Solicitor or Surveyor.